

SCORE

Little Peggy's Love and Mr Oliphant of Condie's Strathspey from:

The New Dance Fan for 1797 (Published by the Proprietor, 1796)

Original Scoring: Solo treble line

Arrangement Scoring: versions in various keys to enable different instruments to play -

Little Peggy's Love - A (original), F, B-flat and G

Mr Oliphant of Condie's Strathspey - G (original), F, B-flat and C

Source: British Museum 1891,0713.96

Scores and arrangements produced with generous support from the Arts and Humanities Research Council of Great Britain, the University of Southampton and the Royal College of Music.

Project Directors: Prof. Jeanice Brooks, Dr Wiebke Thormählen, Dr Katrina Faulds
Research Associate: Robert Percival

Arrangements and recordings are free for non-commercial use under [Creative Commons License Attribution-Non-Commercial 4.0](https://creativecommons.org/licenses/by-nc/4.0/). If you use either of these, please attribute them to "Music, Home and Heritage – Domestic and Social Dance in Georgian Britain" and with a link to <https://sound-heritage.ac.uk/dance>



Arts and
Humanities
Research Council

UNIVERSITY OF
Southampton



FIGURES

Little Peggy's Love

1st & 2nd Cu: set & half right & left, back again, lead down the middle up again, cast off and Allemande

Mr Oliphant of Condie's Strathspey

1st & 2nd Cu: & hands across, back again lead down the middle up again & Cast off Right & Left at top

The New Dance Fan for 1797

Little Peggy's Love (original key)



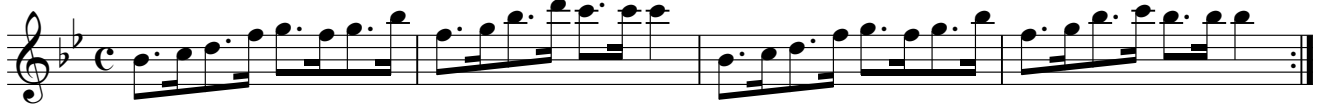
Mr. Oliphant of Condie's Strathspey (original key)



Little Peggy's Love in F



Little Peggy's Love in B-flat



Little Peggy's Love in G



Mr. Oliphant of Condie's Strathspey in F

Musical score for Mr. Oliphant of Condie's Strathspey in F. The score is written in treble clef with a key signature of one flat (F major) and a common time signature (C). It consists of four staves. The first staff contains the first four measures. The second staff starts at measure 4 and contains measures 4 through 7. The third staff starts at measure 8 and contains measures 8 through 11. The fourth staff starts at measure 12 and contains measures 12 through 14, ending with a double bar line.

Mr. Oliphant of Condie's Strathspey in B-flat

Musical score for Mr. Oliphant of Condie's Strathspey in B-flat. The score is written in treble clef with a key signature of two flats (B-flat major) and a common time signature (C). It consists of four staves. The first staff contains the first four measures. The second staff starts at measure 4 and contains measures 4 through 7. The third staff starts at measure 8 and contains measures 8 through 11. The fourth staff starts at measure 12 and contains measures 12 through 14, ending with a double bar line.

Mr. Oliphant of Condie's Strathspey in C

Musical score for Mr. Oliphant of Condie's Strathspey in C. The score is written in treble clef with a key signature of no flats (C major) and a common time signature (C). It consists of four staves. The first staff contains the first four measures. The second staff starts at measure 4 and contains measures 4 through 7. The third staff starts at measure 8 and contains measures 8 through 11. The fourth staff starts at measure 12 and contains measures 12 through 14, ending with a double bar line.