

# PARTS

*Frog in the Middle* from:

*Le Sylphe. An Elegant Collection of Twenty Four Country Dances, the Figures by Mr. Wilson, for the Year 1814. Adapted for the German Flute, Violin, Flageolet or Oboe* (London: Button & Whitaker, [1814])

- Horn
- Violin I
- Violin II
- Harp
- Tambourine

Source: British Library Music Collections a.9.aa.(2.)

Scores and arrangements produced with generous support from the Arts and Humanities Research Council of Great Britain, the University of Southampton and the Royal College of Music.

Project Directors: Prof. Jeanice Brooks, Dr Wiebke Thormählen, Dr Katrina Faulds  
Research Associate: Robert Percival

Arrangements and recordings are free for non-commercial use under [Creative Commons License Attribution-Non-Commercial 4.0](#). If you use either of these, please attribute them to "Music, Home and Heritage – Domestic and Social Dance in Georgian Britain" and with a link to <https://sound-heritage.ac.uk/dance>



Arts and  
Humanities  
Research Council

UNIVERSITY OF  
Southampton





Violin I

# Le Sylphe, 24 Country Dances for the Year 1814

Frog in the Middle

arr. Robert Percival

6

11

1.2.3...

17

To finish



# Le Sylphe, 24 Country Dances for the Year 1814

Frog in the Middle

arr. Robert Percival





Horn

# Le Sylphe, 24 Country Dances for the Year 1814

in B $\flat$

Frog in the Middle

arr. Robert Percival

7

13

1.2.3... To finish

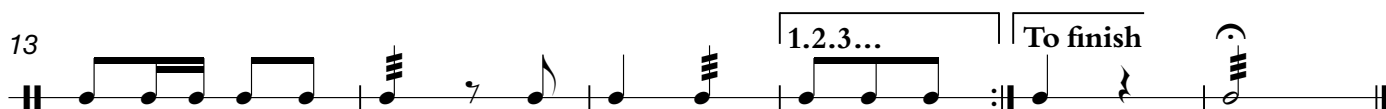
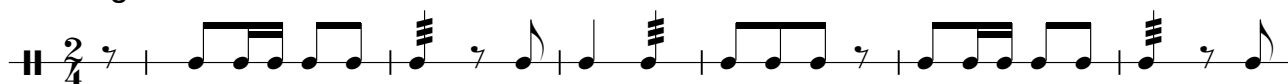




# Le Sylphe, 24 Country Dances for the Year 1814

Frog in the Middle

arr. Robert Percival





# Le Sylphe, 24 Country Dances for the Year 1814

Frog in the Middle

arr. Robert Percival

