

# PARTS

## Willoughby Bertie, 4<sup>th</sup> Earl of Abingdon

*Miss Skinner's Minuet and Dutchess of Marlborough's Minuet from:*

*Twelve Country Dances and Three Capricios for Two Flutes and a Bass, with Three Minuets for Two Flutes, Two Violins, Horns and Bass*  
(London: T. Monzani, [1787])

- Flauto I
- Flauto II
- Horn I
- Horn II
- Violin I
- Violin II
- Basso

Source: British Library Music Collections g.443.d.(2.)

Scores and arrangements produced with generous support from the Arts and Humanities Research Council of Great Britain, the University of Southampton and the Royal College of Music.

Project Directors: Prof. Jeanice Brooks, Dr Wiebke Thormählen, Dr Katrina Faulds  
Research Associate: Robert Percival

Arrangements and recordings are free for non-commercial use under [Creative Commons License Attribution-Non-Commercial 4.0](https://creativecommons.org/licenses/by-nc/4.0/). If you use either of these, please attribute them to "Music, Home and Heritage – Domestic and Social Dance in Georgian Britain" and with a link to <https://sound-heritage.ac.uk/dance>



Arts and  
Humanities  
Research Council

UNIVERSITY OF  
**Southampton**





# 12 Country Dances and 3 Capriccios with 3 Minuets (1787)

## Minuet I. Miss Skinner's

Willoughby BERTIE

6

11

16

22

## Minuet II. Dutchess of Marlborough's

7

13

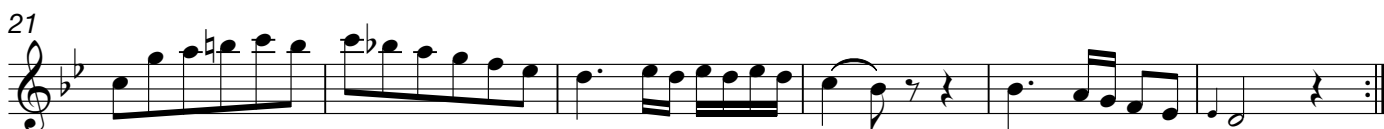
21



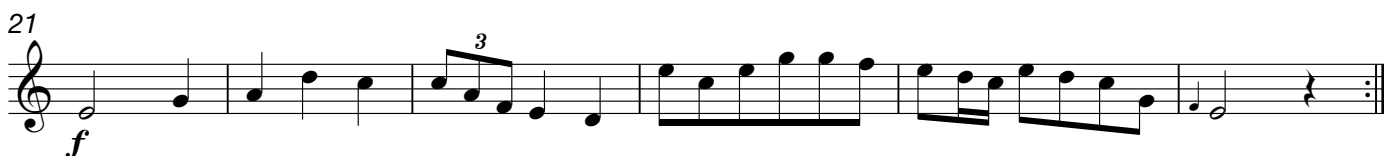
# 12 Country Dances and 3 Capriccios with 3 Minuets (1787)

## Minuet I. Miss Skinner's

Willoughby BERTIE



## Minuet II. Dutchess of Marlborough's





Horn I

# 12 Country Dances and 3 Capriccios with 3 Minuets (1787)

## Minuet I. Miss Skinner's

Willoughby BERTIE

in B $\flat$

Musical score for Minuet I. Miss Skinner's, in B $\flat$ , 3/4 time. The score consists of three staves. The first staff contains the first eight measures. The second staff starts at measure 8 and includes a first ending bracket over measures 10-11 and a second ending bracket over measures 12-13. The third staff starts at measure 18 and includes a triplet bracket over measures 20-22. The piece concludes with a double bar line and repeat dots.

## Minuet II. Dutchess of Marlborough's

in C

Musical score for Minuet II. Dutchess of Marlborough's, in C, 3/4 time. The score consists of three staves. The first staff contains the first nine measures. The second staff starts at measure 9 and includes a first ending bracket over measures 10-11 and a second ending bracket over measures 12-13. The third staff starts at measure 17 and includes a first ending bracket over measures 18-19 and a second ending bracket over measures 20-21. A forte (*f*) dynamic marking is placed below the first measure of the third staff. The piece concludes with a double bar line and repeat dots.





Horn II

# 12 Country Dances and 3 Capriccios with 3 Minuets (1787)

## Minuet I. Miss Skinner's

Willoughby BERTIE

in B $\flat$

Musical score for Minuet I. Miss Skinner's, in B $\flat$ , 3/4 time. The score consists of three staves. The first staff contains the first eight measures. The second staff starts at measure 8 and includes a first ending bracket and a 4-measure section. The third staff starts at measure 18 and includes a 3-measure section. The piece concludes with a double bar line and repeat dots.

## Minuet II. Dutchess of Marlborough's

in C

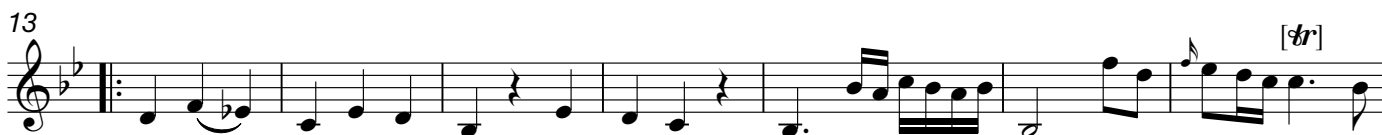
Musical score for Minuet II. Dutchess of Marlborough's, in C, 3/4 time. The score consists of three staves. The first staff contains the first nine measures. The second staff starts at measure 9 and includes a first ending bracket. The third staff starts at measure 17 and includes a 4-measure section and a forte (*f*) dynamic marking. The piece concludes with a double bar line and repeat dots.



# 12 Country Dances and 3 Capriccios with 3 Minuets (1787)

## Minuet I. Miss Skinner's

Willoughby BERTIE



## Minuet II. Dutchess of Marlborough's





# 12 Country Dances and 3 Capricios with 3 Minuets (1787)

Willoughby BERTIE

## Minuet I. Miss Skinner's

Musical score for Minuet I. Miss Skinner's, measures 1-20. The piece is in 3/4 time and B-flat major. It begins with a treble clef and a key signature of two flats. The first staff (measures 1-6) features a rhythmic pattern of eighth and sixteenth notes, including a triplet in measure 6. The second staff (measures 7-12) continues the melody with a repeat sign at the end. The third staff (measures 13-19) starts with a repeat sign and includes a triplet in measure 19. The fourth staff (measures 20) concludes the piece with a repeat sign.

## Minuet II. Dutchess of Marlborough's

Musical score for Minuet II. Dutchess of Marlborough's, measures 1-21. The piece is in 3/4 time and B-flat major. It begins with a treble clef and a key signature of two flats. The first staff (measures 1-6) is a simple melody. The second staff (measures 7-13) includes a repeat sign and a dynamic marking of *p* (piano) in measure 13. The third staff (measures 14-20) continues the melody. The fourth staff (measures 21) concludes the piece with a triplet in measure 21 and a repeat sign.



# 12 Country Dances and 3 Capricios with 3 Minuets (1787)

## Minuet I. Miss Skinner's

Willoughby BERTIE



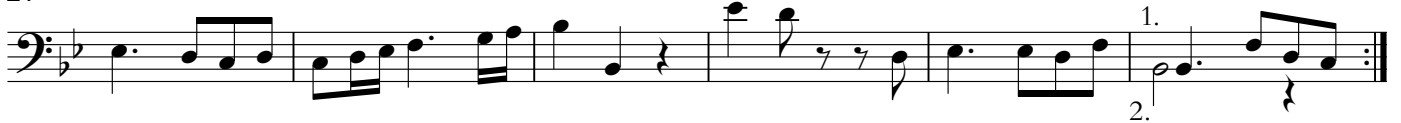
8



14



21



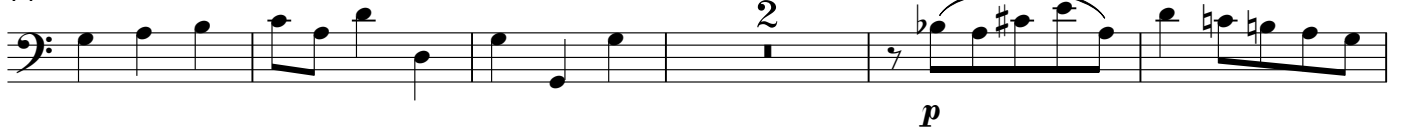
## Minuet II. Dutchess of Marlborough's



8



14



21

